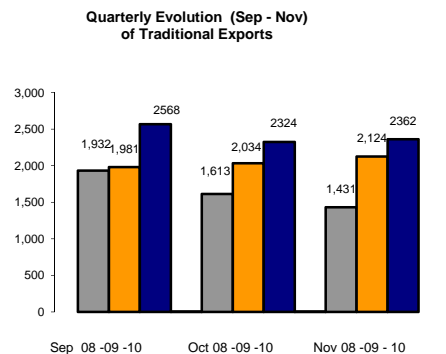


Sector	November			Exports Last 12 months (Dic - Nov)		
	Mill. FOB USD 09	Mill. FOB USD 10	% Change	Mill. FOB USD 08-09	Mill. FOB USD 09-10	% Change
Traditional Agriculture	93.1	133.1	43.0%	613.8	939.3	53.0%
Traditional Fishing	49.1	36.6	-25.3%	1,585.1	1,990.8	25.6%
Petroleum	222.0	238.2	7.3%	1,840.2	3,026.6	64.5%
Traditional Mining	1,760.0	1,954.5	11.0%	15,708.7	20,769.7	32.2%
<b>Total Traditional</b>	<b>2,124.2</b>	<b>2,362.5</b>	<b>11.2%</b>	<b>19,747.8</b>	<b>26,726.5</b>	<b>35.3%</b>
Agroindustries	196.5	249.4	26.9%	1,741.9	2,142.0	23.0%
Textiles	30.3	40.3	33.2%	336.8	377.9	12.2%
Apparel	102.1	121.8	19.3%	1,182.0	1,163.9	-1.5%
Fishing	40.0	59.5	48.7%	514.3	618.9	20.3%
Metal - Mechanic	41.7	31.3	-24.9%	357.6	393.0	9.9%
Chemicals	78.2	189.4	142.4%	825.6	1,396.5	69.1%
Steel Products	43.0	77.4	80.1%	471.5	830.0	76.0%
Non Metallic Mining	13.7	34.9	155.2%	145.3	233.5	60.7%
Wood Products	17.3	12.4	-28.3%	151.4	173.5	14.6%
Varios	32.3	34.4	6.6%	344.7	373.7	8.4%
<b>Total Non Traditional</b>	<b>595.0</b>	<b>850.9</b>	<b>43.0%</b>	<b>6,071.3</b>	<b>7,702.9</b>	<b>26.9%</b>
<b>Total</b>	<b>2,719.2</b>	<b>3,213.3</b>	<b>18.2%</b>	<b>25,819.1</b>	<b>34,429.4</b>	<b>33.3%</b>

Economic Research - ADEX  
Source: ADEX DATA TRADE

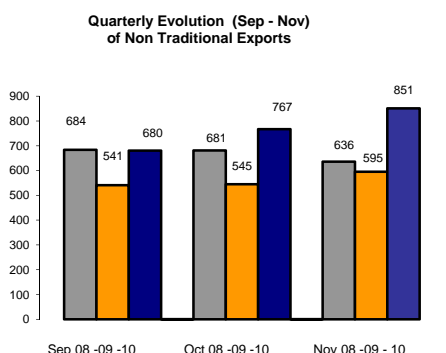


Economic Research - ADEX  
Source: ADEX DATA TRADE

**TOTAL EXPORTS**  
2005, 2008 y 2009  
(Millions of FOB USD)

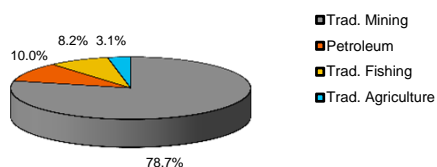
SECTOR	2005		2008		2009		% Change 2008-2009	Average % Change 2005-2008
	Mill. FOB USD	% Share	FOB Mill. USD	% Share	FOB Mill. USD	% Share		
<b>TOTAL</b>	<b>17,324</b>	<b>100%</b>	<b>30,628</b>	<b>100%</b>	<b>26,714</b>	<b>100%</b>	<b>-13%</b>	<b>13%</b>
<b>TOTAL TRADITIONAL</b>	<b>13,037</b>	<b>75%</b>	<b>23,153</b>	<b>76%</b>	<b>20,522</b>	<b>77%</b>	<b>-11%</b>	<b>14%</b>
TRADITIONAL MINING	9,814	57%	17,903	58%	16,143	60%	-10%	15%
PETROLEUM	1,590	9%	2,821	9%	2,061	8%	-27%	9%
TRADITIONAL FISHING	1,303	8%	1,750	6%	1,683	6%	-4%	7%
TRADITIONAL AGRICULTURE	330	2%	679	2%	636	2%	-6%	23%
<b>TOTAL NON TRADITIONAL</b>	<b>4,287</b>	<b>25%</b>	<b>7,475</b>	<b>24%</b>	<b>6,190</b>	<b>23%</b>	<b>-17%</b>	<b>11%</b>
AGROINDUSTRIES	1,008	6%	1,876	6%	1,825	7%	-3%	17%
APPAREL	1,050	6%	1,613	5%	1,154	4%	-11%	-28%
CHEMICALS	535	3%	1,028	3%	836	3%	-14%	-19%
STEEL PRODUCTS	385	2%	811	3%	505	2%	-16%	-38%
FISHING	331	2%	620	2%	526	2%	-18%	-15%
VARIOUS	275	2%	418	1%	340	1%	-19%	-19%
TEXTILE	225	1%	393	1%	341	1%	-21%	-13%
METAL - MECHANIC	191	1%	324	1%	359	1%	22%	11%
WOOD PRODUCTS	168	1%	219	1%	157	1%	-23%	-28%
NON METALIC MINING	118	1%	173	1%	147	1%	-15%	7%

Economic Research - ADEX  
Source: Aduanas Perú

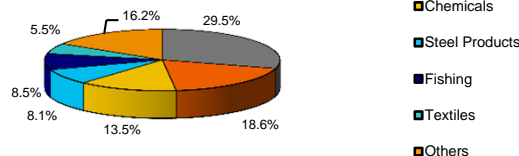


Economic Research - ADEX  
Source: ADEX DATA TRADE

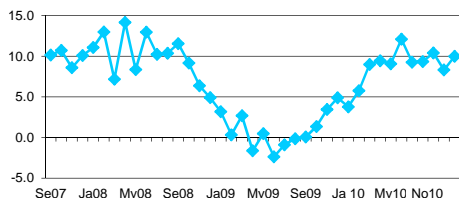
**Traditional Exports by Sector 2009**



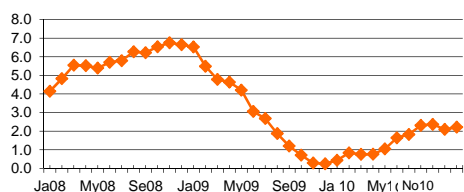
**Non Traditional Exports by Sector 2009**



**GDP (% change)**



**Inflation Rate (% change 12 months)**



**Macroeconomic Indicators**

	Sep	2010 Oct	Nov
<b>Gross Domestic Product (GDP)</b>			
Growth Rate (%)	10.4	8.3	10.0
<b>Trade Balance (millions of USD)</b>			
Exports (millions of USD)	584	424	557
Imports (millions of USD)	3281	3083	3256
	2697	2659	2698
<b>Inflation Rate last 12 months (%)</b>	2.37	2.10	2.22
<b>Exchange Rate</b>			
Exchange Rate (period average)	2.79	2.79	2.81
% Change (last 12 months)	-4.09	-2.80	-2.75
Exchange Rate (end of period)	2.79	2.80	2.83
% Change (last 12 months)	-3.35	-3.68	-1.68
<b>Real Multilateral Exchange Rate Index</b>			
% Change (last 12 months)	95.71	97.75	98.12
	-4.43	-2.16	-3.20
<b>Interest Rates (period average)</b>			
Local Currency			
-Interbank	2.70	3.00	3.00
- Monetary Policy Reference Rate	3.00	3.00	3.00
Foreign Currency			
-Interbank	1.00	3.00	1.10
<b>Unemployment Rate Lima (%)</b>	7.9.	7.9	ND

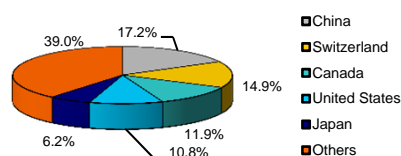
Source: BCRP, INEI  
(\* ) Projections made by Ministry of Economy and Finances

Exports Indicators  
December 2009 - November 2010

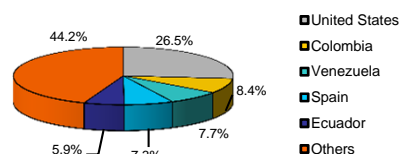
Traditional Sector			Non Traditional Sector		
<b>Companies</b>					
<b>Number of Exporting Companies</b>			<b>Number of Exporting Companies</b>		
406			6,827		
<b>Ranking of Companies</b>			<b>Ranking of Companies</b>		
N°	Company	Millions of USD	N°	Company	Millions of USD
1	SOUTHERN PERU COPPER CORPORATION	2,740	1	PERU LNG S.R.L.	217
2	COMPANIA MINERA ANTAMINA S.A	2,610	2	CENIELSA PERU S.A.C.	175
3	MINERA YANACOCHA S.R.L.	1,906	3	TECNOFIL S.A	126
4	SOCIEDAD MINERA CERRO VERDE S.A.A.	1,833	4	SOC MINERA REF DE ZINC CA JAMARQUI IIA	112
5	CONSORCIO MINERO SA - CORMIN	1,749	5	ALICORP S.A.	104
<b>Products</b>					
<b>Number of Exported Products</b>			<b>Number of Exported Products</b>		
86			3,758		
<b>Ranking of Products</b>			<b>Ranking of Products</b>		
N°	Product	Millions of USD	N°	Product	Millions of USD
1	GOLD, IN ITS OTHER RAW FORMS	7,623	1	ASPARAGUS, FRESH OR REFRIGERATED	287
2	COPPER MINERALS AND CONCENTRATES	5,876	2	LIQUEFIED NATURAL GAS	217
3	REFINED COPPER CATODS AND ITS PARTS	2,515	3	REFINED COPPER WIRES WITH TRANSVERSAL SECTION WITH DIAMETER OF MORE THAN 6 MM	261
4	FISHMEAL, PELLETS WITH A FAT CONTENT OVER A 2% IN WEIGHT	1,713	4	FRESH GRAPES	170
5	ZINC MINERALS AND CONCENTRATES	1,474	5	OTHER CUTTLEFISH, BUBBLES, FISH AND SQUID, FROZEN, DRIED, SALTED OR IN BRINE	152
<b>Markets</b>					
<b>Number of Importing Markets</b>			<b>Number of Importing Markets</b>		
94			174		
<b>Ranking of Markets</b>			<b>Ranking of Markets</b>		
N°	Market	Millions of USD	N°	Market	Millions of USD
1	CHINA	5,071	1	UNITED STATES	1,926
2	SWITZERLAND	3,763	2	COLOMBIA	674
3	UNITED STATES	3,750	3	ECUADOR	490
4	CANADA	3,176	4	VENEZUELA	482
5	JAPAN	1,757	5	SPAIN	467

Economic Research - ADEX  
Source: ADEX DATA TRADE

Traditional Exports Destinations  
Quarter Ago 10 - Oct 10



Non Traditional Exports Destinations  
Quarter Ago 10 - Oct 10



Peru in the Global Economy

Countries	Gross Domestic Product Crec. Var %			Inflation Rate 2009	WEF Global Competitiveness Index(**)	
	2009	2010*	2011*		GCI 2009-2010 rank	GCI 2008-2009 rank
United States	-2.4%	3.1%	2.6%	-0.4%	2	1
Japan	-5.2%	1.9%	2.0%	1.5%	8	9
China	8.7%	10.0%	9.9%	-0.1%	29	30
Spain	-3.6%	-0.4%	0.9%	-0.3%	33	29
Germany	-5.0%	1.2%	1.7%	0.1%	7	7
Chile	-1.5%	4.7%	6.0%	2.0%	30	28
Brazil	-0.2%	5.5%	4.1%	4.8%	56	64
Venezuela	-3.3%	-2.6%	0.4%	29.5%	113	105
Colombia	0.1%	2.3%	4.0%	4.6%	69	74
Ecuador	0.4%	2.5%	2.3%	5.0%	105	104
Mexico	-6.5%	4.2%	4.5%	5.4%	60	60
Bolivia	3.3%	4.0%	4.0%	4.3%	120	118
Peru	0.9%	6.3%	6.0%	3.2%	78	83

Source: Economist Intelligence Unit, IMF  
\* Projections made by IMF (October 2010)  
\*\* Ranking by World Economic Forum.