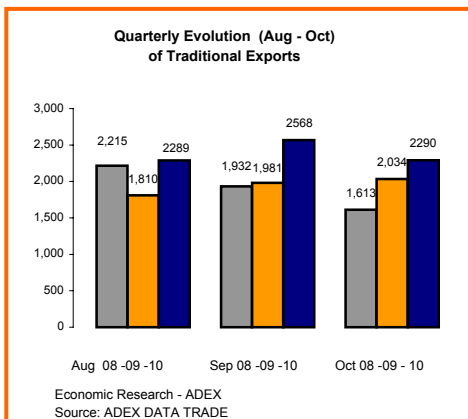


PERUVIAN EXPORTS: 2008 - 2010						
Sector	October			Exports Last 12 months (Nov - Oct)		
	Mill. FOB USD 09	Mill. FOB USD 10	% Change	Mill. FOB USD 08-09	Mill. FOB USD 09-10	% Change
Traditional Agriculture	85.0	133.6	57.1%	612.0	897.7	46.7%
Traditional Fishing	58.6	94.7	61.6%	1,617.7	2,002.5	23.8%
Petroleum	219.6	225.5	2.7%	1,747.4	2,986.7	70.9%
Traditional Mining	1,670.3	1,835.9	9.9%	15,077.6	20,547.5	36.3%
Total Traditional	2,033.5	2,289.7	12.6%	19,054.7	26,434.4	38.7%
Agroindustries	166.7	208.1	24.9%	1,721.8	2,079.6	20.8%
Textiles	28.2	35.2	24.9%	335.1	367.0	9.5%
Apparel	90.6	110.0	21.4%	1,246.2	1,142.9	-8.3%
Fishing	37.5	49.3	31.5%	523.3	599.3	14.5%
Metal - Mechanic	36.4	32.0	-12.1%	342.7	401.4	17.1%
Chemicals	69.8	141.6	102.8%	830.3	1,269.2	52.9%
Steel Products	54.3	80.5	48.3%	464.2	789.6	70.1%
Non Metallic Mining	14.0	26.6	90.1%	147.1	212.1	44.2%
Wood Products	15.3	12.3	-19.5%	145.8	177.1	21.5%
Various	32.3	43.5	34.9%	355.4	370.4	4.2%
Total Non Traditional	545.0	739.2	35.6%	6,112.0	7,408.6	21.2%
Total	2,578.6	3,028.9	17.5%	25,166.8	33,843.0	34.5%

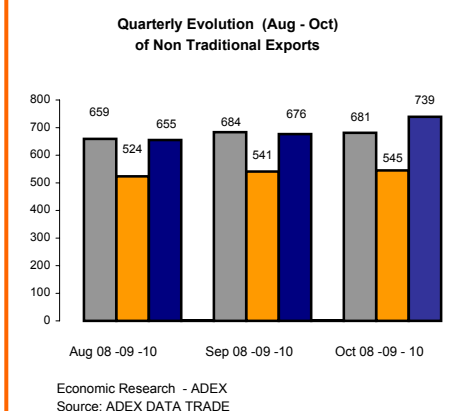
Economic Research- ADEX
Source: ADEX DATA TRADE



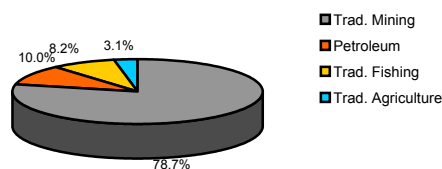
TOTAL EXPORTS
2005, 2008 y 2009
(MILLIONS OF FOB USD)

SECTOR	2005		2008		2009		% Change 2008-2009	Average % Change 2005-2008
	Mill. FOB USD	% Share	FOB Mill. USD	% Share	FOB Mill. USD	% Share		
TOTAL	17,324	100%	30,628	100%	26,714	100%	-13%	13%
TOTAL TRADITIONAL	13,037	75%	23,153	76%	20,522	77%	-11%	14%
TRADITIONAL MINING	9,814	57%	17,503	58%	16,143	60%	-10%	15%
PETROLEUM	1,590	9%	2,821	9%	2,051	8%	-27%	9%
TRADITIONAL FISHING	1,303	8%	1,750	6%	1,683	6%	-4%	7%
TRADITIONAL AGRICULTURE	330	2%	679	2%	636	2%	-6%	23%
TOTAL NON TRADITIONAL	4,287	25%	7,475	24%	6,190	23%	-17%	11%
AGROINDUSTRIES	1,008	6%	1,876	6%	1,825	7%	-3%	17%
APPAREL	1,050	6%	1,613	5%	1,154	4%	-28%	4%
CHEMICALS	535	3%	1,028	3%	836	3%	-19%	14%
STEEL PRODUCTS	385	2%	811	3%	505	2%	-38%	15%
FISHING	331	2%	620	2%	526	2%	-15%	14%
VARIOUS	275	2%	418	1%	340	1%	-19%	7%
TEXTILE	225	1%	393	1%	341	1%	-13%	12%
METAL - MECHANIC	191	1%	324	1%	359	1%	22%	20%
WOOD PRODUCTS	168	1%	219	1%	157	1%	-28%	0%
NON METALLIC MINING	118	1%	173	1%	147	1%	-15%	7%

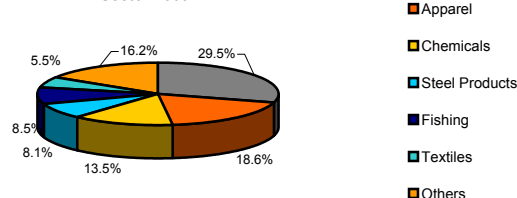
Economic Research - ADEX
Source: Aduanas Perú



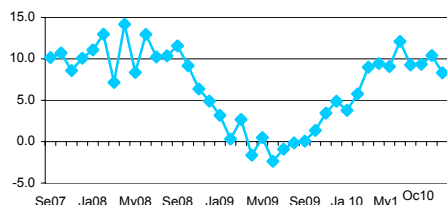
Traditional Exports by Sector 2009



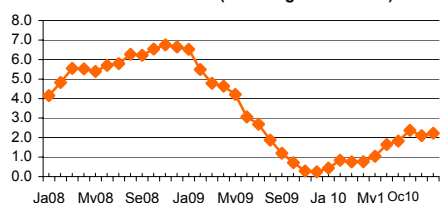
Non Traditional Exports by Sector 2009



GDP (% change)



Inflation Rate (% change 12 months)



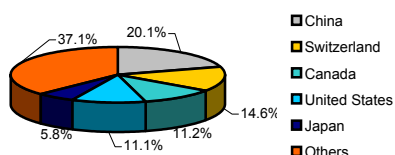
Macroeconomic Indicators

	Aug	2010 Sep	Oct
Gross Domestic Product (GDP)			
Growth Rate (%)	9.3	10.4	8.3
Trade Balance (millions of USD)			
Exports (millions of USD)	370	584	424
Imports (millions of USD)	2952	3281	3083
	2582	2697	2659
Inflation Rate last 12 months (%)	2.37	2.10	2.22
Exchange Rate			
Exchange Rate (period average)	2.80	2.79	2.79
% Change (last 12 months)	-5.04	-4.09	-2.80
Exchange Rate (end of period)	2.80	2.79	2.80
% Change (last 12 months)	-5.07	-3.35	-3.68
Real Multilateral Exchange Rate Index			
% Change (last 12 months)	94.95	95.71	97.73
	-5.54	95.71	97.73
Interest Rates (period average)			
Local Currency			
- Interbank	2.40	2.70	3.00
- Monetary Policy Reference Rate	2.50	3.00	3.00
Foreign Currency			
- Interbank	3.70	1.00	3.00
Unemployment Rate Lima (%)	7.7	7.9	ND

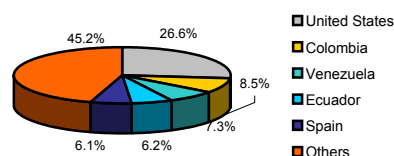
Source: BCRP, INEI
(* Projections made by Ministry of Economy and Finances)

Exports Indicators November 2009 - October 2010					
Traditional Sector			Non Traditional Sector		
Companies					
Number of Exporting Companies			Number of Exporting Companies		
413			6,792		
Ranking of Companies			Ranking of Companies		
N°	Company	Millions of USD	N°	Company	Millions of USD
1	SOUTHERN PERU COPPER CORPORATION	2,713	1	CENTELSA PERU S.A.C.	164
2	COMPANIA MINERA ANTAMINA S.A	2,623	2	PERU LNG S.R.L.	131
3	MINERA YANACOCHA S.R.L.	1,938	3	TECNOFIL S A	118
4	SOCIEDAD MINERA CERRO VERDE S.A.A.	1,747	4	SOC MINERA PERU DE ZINC CA JAMABOJILLA	107
5	CONSORCIO MINERO SA - CORMIN	1,621	5	ALICORP S.A.	102
Products					
Number of Exported Products			Number of Exported Products		
107			3,749		
Ranking of Products			Ranking of Products		
N°	Product	Millions of USD	N°	Product	Millions of USD
1	GOLD, IN ITS OTHER RAW FORMS	7,555	1	ASPARAGUS, FRESH OR REFRIGERATED	287
2	COPPER MINERALS AND CONCENTRATES	5,816	2	REFINED COPPER WIRES WITH TRANSVERSAL SECTION WITH DIAMETER OF MORE THAN 6 MM	241
3	REFINED COPPER CATODS AND ITS PARTS	2,460	3	COTTON T SHIRT OF ONE COLOUR EVEN BLEACHED, FOR MEN OR WOMEN	159
4	FISHMEAL, PELLETS WITH A FAT CONTENT OVER A 2% IN WEIGHT	1,730	4	FRESH GRAPES	157
5	ZINC MINERALS AND CONCENTRATES	1,547	5	OTHER CUTTLEFISH, BUBBLES, FISH AND SQUID, FROZEN, DRIED, SALTED OR IN BRINE	148
Markets					
Number of Importing Markets			Number of Importing Markets		
92			172		
Ranking of Markets			Ranking of Markets		
N°	Market	Millions of USD	N°	Market	Millions of USD
1	CHINA	5,111	1	UNITED STATES	1,854
2	UNITED STATES	3,909	2	COLOMBIA	655
3	SWITZERLAND	3,646	3	ECUADOR	481
4	CANADA	3,102	4	VENEZUELA	467
5	JAPAN	1,760	5	SPAIN	425
Economic Research - ADEX Source: ADEX DATA TRADE					

Traditional Exports Destinations
Quarter Ago 10 - Oct 10



Non Traditional Exports Destinations
Quarter Ago 10 - Oct 10



Peru in the Global Economy

Countries	Gross Domestic Product Crec. Var %			Inflation Rate 2009	WEF Global Competitiveness Index(**)	
	2009	2010*	2011*		GCI 2009- 2010 rank	GCI 2008- 2009 rank
United States	-2.4%	3.1%	2.6%	-0.4%	2	1
Japan	-5.2%	1.9%	2.0%	1.5%	8	9
China	8.7%	10.0%	9.9%	-0.1%	29	30
Spain	-3.6%	-0.4%	0.9%	-0.3%	33	29
Germany	-5.0%	1.2%	1.7%	0.1%	7	7
Chile	-1.5%	4.7%	6.0%	2.0%	30	28
Brazil	-0.2%	5.5%	4.1%	4.8%	56	64
Venezuela	-3.3%	-2.6%	0.4%	29.5%	113	105
Colombia	0.1%	2.3%	4.0%	4.6%	69	74
Ecuador	0.4%	2.5%	2.3%	5.0%	105	104
Mexico	-6.5%	4.2%	4.5%	5.4%	60	60
Bolivia	3.3%	4.0%	4.0%	4.3%	120	118
Peru	0.9%	6.3%	6.0%	3.2%	78	83

Source: Economist Intelligence Unit, IMF
 * Projections made by IMF (October 2010)
 ** Ranking by World Economic Forum.