

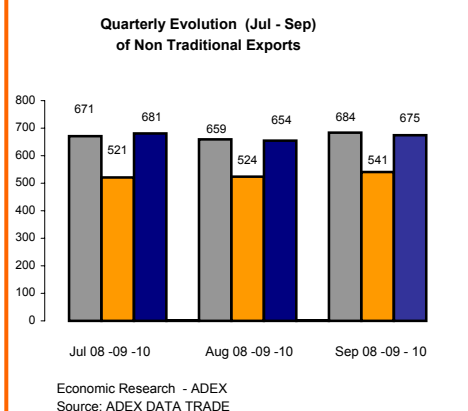
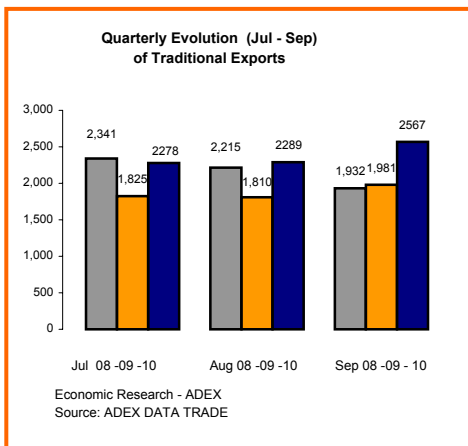
PERUVIAN EXPORTS: 2008 - 2010						
Sector	September			Exports Last 12 months (Oct - Sep)		
	Mill. FOB USD 09	Mill. FOB USD 10	% Change	Mill. FOB USD 08-09	Mill. FOB USD 09-10	% Change
Traditional Agriculture	93.0	139.7	50.2%	635.1	849.0	33.7%
Traditional Fishing	65.3	223.3	241.8%	1,643.2	1,966.4	19.7%
Petroleum	193.8	275.7	42.3%	1,721.8	2,980.5	73.1%
Traditional Mining	1,628.6	1,928.6	18.4%	14,634.0	20,354.2	39.1%
<b>Total Traditional</b>	<b>1,980.7</b>	<b>2,567.3</b>	<b>29.6%</b>	<b>18,634.1</b>	<b>26,150.2</b>	<b>40.3%</b>
Agroindustries	154.9	186.6	20.4%	1,725.8	2,036.9	18.0%
Textiles	28.2	34.6	22.6%	346.8	359.8	3.8%
Apparel	102.1	105.0	2.9%	1,306.6	1,123.1	-14.0%
Fishing	40.6	40.5	-0.2%	539.8	587.2	8.8%
Metal - Mechanic	24.0	30.4	26.8%	341.5	405.5	18.7%
Chemicals	72.6	127.2	75.3%	852.4	1,197.0	40.4%
Steel Products	54.9	73.0	33.0%	470.5	763.2	62.2%
Non Metallic Mining	14.4	30.1	108.7%	149.3	199.4	33.6%
Wood Products	15.3	13.4	-12.9%	148.7	179.7	20.9%
Various	33.9	33.7	-0.7%	366.8	358.8	-2.2%
<b>Total Non Traditional</b>	<b>540.9</b>	<b>674.5</b>	<b>24.7%</b>	<b>6,248.2</b>	<b>7,210.7</b>	<b>15.4%</b>
<b>Total</b>	<b>2,521.6</b>	<b>3,241.8</b>	<b>28.6%</b>	<b>24,882.4</b>	<b>33,360.9</b>	<b>34.1%</b>

Economic Research - ADEX  
Source: ADEX DATA TRADE

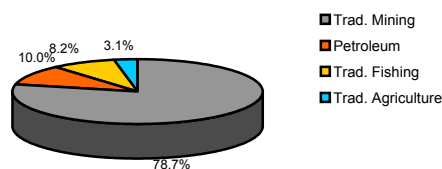
**TOTAL EXPORTS**  
2005, 2008 y 2009  
(MILLIONS OF FOB USD)

SECTOR	2005		2008		2009		% Change 2008-2009	Average % Change 2005-2008
	Mill. FOB USD	% Share	FOB Mill. USD	% Share	FOB Mill. USD	% Share		
<b>TOTAL</b>	<b>17,324</b>	<b>100%</b>	<b>30,628</b>	<b>100%</b>	<b>26,714</b>	<b>100%</b>	<b>-13%</b>	<b>13%</b>
<b>TOTAL TRADITIONAL</b>	<b>13,037</b>	<b>75%</b>	<b>23,153</b>	<b>76%</b>	<b>20,522</b>	<b>77%</b>	<b>-11%</b>	<b>14%</b>
TRADITIONAL MINING	9,814	57%	17,503	58%	16,143	60%	-10%	15%
PETROLEUM	1,590	9%	2,821	9%	2,051	8%	-27%	9%
TRADITIONAL FISHING	1,303	8%	1,750	6%	1,683	6%	-4%	7%
TRADITIONAL AGRICULTURE	330	2%	679	2%	636	2%	-6%	23%
<b>TOTAL NON TRADITIONAL</b>	<b>4,287</b>	<b>25%</b>	<b>7,475</b>	<b>24%</b>	<b>6,190</b>	<b>23%</b>	<b>-17%</b>	<b>11%</b>
AGROINDUSTRIES	1,008	6%	1,876	6%	1,825	7%	-3%	17%
APPAREL	1,050	6%	1,613	5%	1,154	4%	-28%	4%
CHEMICALS	535	3%	1,028	3%	836	3%	-19%	14%
STEEL PRODUCTS	385	2%	811	3%	505	2%	-38%	15%
FISHING	331	2%	620	2%	526	2%	-15%	14%
VARIOUS	275	2%	418	1%	340	1%	-19%	7%
TEXTILE	225	1%	393	1%	341	1%	-13%	12%
METAL - MECHANIC	191	1%	324	1%	359	1%	22%	20%
WOOD PRODUCTS	168	1%	219	1%	157	1%	-28%	0%
NON METALIC MINING	118	1%	173	1%	147	1%	-15%	7%

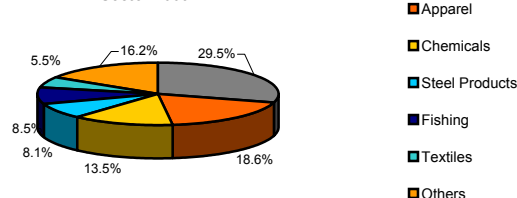
Economic Research - ADEX  
Source: Aduanas Perú



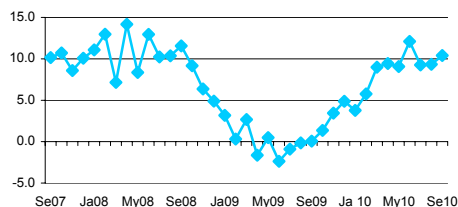
**Traditional Exports by Sector 2009**



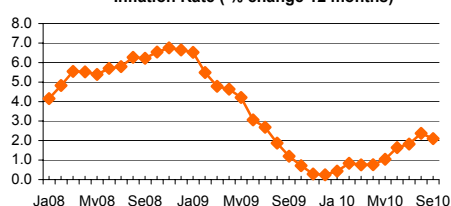
**Non Traditional Exports by Sector 2009**



**GDP (% change)**



**Inflation Rate (% change 12 months)**



**Macroeconomic Indicators**

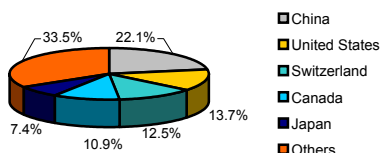
	Jun	2010 Aug	Sep
<b>Gross Domestic Product (GDP)</b>			
Growth Rate (%)	9.3	9.3	10.4
<b>Trade Balance (millions of USD)</b>			
Exports (millions of USD)	445	370	584
Imports (millions of USD)	2964	2952	3281
Inflation Rate last 12 months (%)	1.82	2.37	2.10
<b>Exchange Rate</b>			
Exchange Rate (period average)	2.82	2.80	2.79
% Change (last 12 months)	-6.30	-5.04	-4.10
Exchange Rate (end of period)	2.82	2.80	2.79
% Change (last 12 months)	-5.46	-5.07	-3.35
Real Multilateral Exchange Rate Index	94.97	94.95	95.70
% Change (last 12 months)	-6.42	94.95	95.70
<b>Interest Rates (period average)</b>			
Local Currency			
-Interbank	1.90	2.40	2.70
- Monetary Policy Reference Rate	2.00	2.50	3.00
Foreign Currency			
-Interbank	1.90	3.70	1.00
<b>Unemployment Rate Lima (%)</b>	7.3	7.7	7.9

Source: BCRP, INEI  
(\* Projections made by Ministry of Economy and Finances)

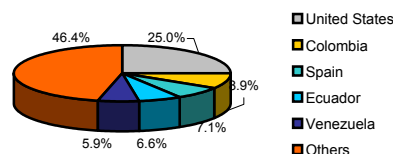
Exports Indicators							
October 2009 - September 2010							
Traditional Sector			Non Traditional Sector				
Companies							
Number of Exporting Companies			404	Number of Exporting Companies			6,782
Ranking of Companies			Ranking of Companies				
N°	Company	Millions of USD	N°	Company	Millions of USD		
1	SOUTHERN PERU COPPER CORPORATION	2,741	1	CENNELSA PERU S.A.C.	154		
2	COMPANIA MINERA ANTIMINA S.A	2,593	2	TECNOFIL S.A.	115		
3	MINERA YANACOCHA S.R.L.	1,963	3	PERU LNG S.R.L.	104		
4	CONSORCIO MINERO SA - CORMIN	1,713	4	SOC MINERA NET DE ZINC CAJAMARQUELA	103		
5	SOCIEDAD MINERA CERRO VERDE S.A.A.	1,705	5	ALICORP S.A.	100		
Products							
Number of Exported Products			90	Number of Exported Products			3,753
Ranking of Products			Ranking of Products				
N°	Product	Millions of USD	N°	Product	Millions of USD		
1	GOLD, IN ITS OTHER RAW FORMS	7,521	1	ASPARAGUS, FRESH OR REFRIGERATED	285		
2	COPPER MINERALS AND CONCENTRATES	5,768	2	REFINED COPPER WIRES WITH TRANSVERSAL SECTION WITH DIAMETER OF MORE THAN 6 MM	223		
3	REFINED COPPER CATODS AND ITS PARTS	2,416	3	COTTON T-SHIRT OF ONE COLOUR EVEN BLEACHED, FOR MEN OR WOMEN	161		
4	FISHMEAL, PELLETS WITH A FAT CONTENT OVER A 2% IN WEIGHT	1,696	4	FRESH GRAPES	157		
5	ZINC MINERALS AND CONCENTRATES	1,570	5	OTHER CUTTLEFISH, BUBBLES, FISH AND SQUID, FROZEN, DRIED, SALTED OR IN BRINE	146		
Markets							
Number of Importing Markets			93	Number of Importing Markets			172
Ranking of Markets			Ranking of Markets				
N°	Market	Millions of USD	N°	Market	Millions of USD		
1	CHINA	5,140	1	UNITED STATES	1,798		
2	UNITED STATES	4,020	2	COLOMBIA	629		
3	SWITZERLAND	3,598	3	ECUADOR	469		
4	CANADA	3,033	4	VENEZUELA	462		
5	JAPAN	1,842	5	SPAIN	413		

Economic Research - ADEX  
 Source: ADEX DATA TRADE

Traditional Exports Destinations  
 Quarter Jul 10 - Sep 10



Non Traditional Exports Destinations  
 Quarter Jul 10 - Sep 10



Peru in the Global Economy

Countries	Gross Domestic Product Crec. Var %			Inflation Rate 2009	WEF Global Competitiveness Index(**)	
	2009	2010*	2011*		GCI 2009-2010 rank	GCI 2008-2009 rank
United States	-2.4%	3.1%	2.6%	-0.4%	2	1
Japan	-5.2%	1.9%	2.0%	1.5%	8	9
China	8.7%	10.0%	9.9%	-0.1%	29	30
Spain	-3.6%	-0.4%	0.9%	-0.3%	33	29
Germany	-5.0%	1.2%	1.7%	0.1%	7	7
Chile	-1.5%	4.7%	6.0%	2.0%	30	28
Brazil	-0.2%	5.5%	4.1%	4.8%	56	64
Venezuela	-3.3%	-2.6%	0.4%	29.5%	113	105
Colombia	0.1%	2.3%	4.0%	4.6%	69	74
Ecuador	0.4%	2.5%	2.3%	5.0%	105	104
Mexico	-6.5%	4.2%	4.5%	5.4%	60	60
Bolivia	3.3%	4.0%	4.0%	4.3%	120	118
Peru	0.9%	6.3%	6.0%	3.2%	78	83

Source: Economist Intelligence Unit, IMF  
 \* Projections made by IMF (October 2010)  
 \*\* Ranking by World Economic Forum.