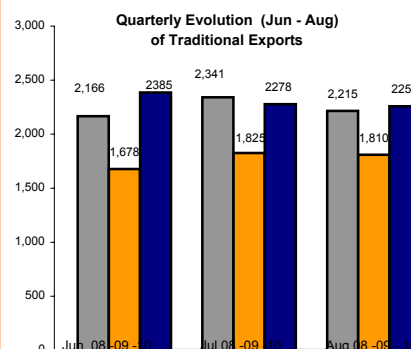


PERUVIAN EXPORTS: 2008 - 2010

Sector	August			Exports Last 12 months (Sep - Aug)		
	Mill. FOB USD 09	Mill. FOB USD 10	% Change	Mill. FOB USD 08-09	Mill. FOB USD 09-10	% Change
Traditional Agriculture	73.4	132.3	80.4%	646.3	797.1	23.3%
Traditional Fishing	164.4	196.8	19.7%	1,698.9	1,808.5	6.5%
Petroleum	220.4	236.7	7.4%	1,702.3	2,875.7	68.9%
Traditional Mining	1,351.5	1,691.9	25.2%	14,538.2	19,962.5	37.3%
<b>Total Traditional</b>	<b>1,809.7</b>	<b>2,257.8</b>	<b>24.8%</b>	<b>18,585.7</b>	<b>25,443.8</b>	<b>36.9%</b>
Agroindustries	154.3	176.3	14.3%	1,756.1	2,006.8	14.3%
Textiles	32.3	33.6	4.2%	351.1	352.9	0.5%
Apparel	95.8	94.0	-1.8%	1,325.5	1,118.5	-15.6%
Fishing	38.7	38.8	0.3%	553.2	586.7	6.0%
Metal - Mechanic	29.4	33.0	12.1%	348.0	394.4	13.3%
Chemicals	69.5	141.3	103.4%	884.4	1,139.6	28.9%
Steel Products	50.2	65.5	30.5%	497.9	740.4	48.7%
Non Metallic Mining	13.1	19.2	47.3%	148.7	183.7	23.5%
Wood Products	11.8	12.1	2.7%	152.2	181.0	19.0%
Various	28.6	30.0	4.8%	373.9	358.7	-4.0%
<b>Total Non Traditional</b>	<b>523.6</b>	<b>643.8</b>	<b>23.0%</b>	<b>6,391.0</b>	<b>7,062.8</b>	<b>10.5%</b>
<b>Total</b>	<b>2,333.2</b>	<b>2,901.6</b>	<b>24.4%</b>	<b>24,976.7</b>	<b>32,506.6</b>	<b>30.1%</b>

Economic Research - ADEX  
Source: ADEX DATA TRADE

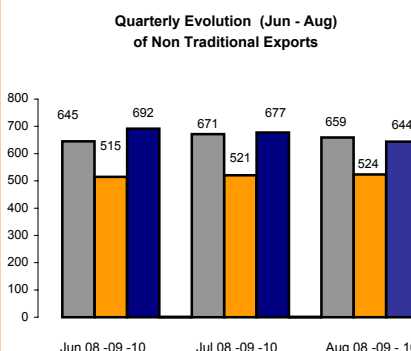


Economic Research - ADEX  
Source: ADEX DATA TRADE

TOTAL EXPORTS  
2005, 2008 y 2009  
(MILLIONS OF FOB USD)

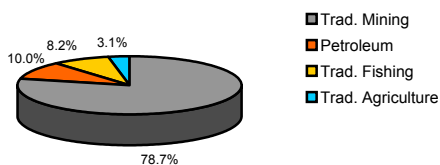
SECTOR	2005		2008		2009		% Change 2008-2009	Average % Change 2005-2008
	Mill. FOB USD	% Share	FOB Mill. USD	% Share	FOB Mill. USD	% Share		
<b>TOTAL</b>	<b>17,324</b>	<b>100%</b>	<b>30,628</b>	<b>100%</b>	<b>26,714</b>	<b>100%</b>	<b>-13%</b>	<b>13%</b>
<b>TOTAL TRADITIONAL</b>	<b>13,037</b>	<b>75%</b>	<b>23,153</b>	<b>76%</b>	<b>20,522</b>	<b>77%</b>	<b>-11%</b>	<b>14%</b>
TRADITIONAL MINING	9,814	57%	17,503	58%	16,143	60%	-10%	15%
PETROLEUM	1,590	9%	2,821	9%	2,051	8%	-27%	9%
TRADITIONAL FISHING	1,303	8%	1,750	6%	1,683	6%	-4%	7%
TRADITIONAL AGRICULTURE	330	2%	679	2%	636	2%	-6%	23%
<b>TOTAL NON TRADITIONAL</b>	<b>4,287</b>	<b>25%</b>	<b>7,475</b>	<b>24%</b>	<b>6,190</b>	<b>23%</b>	<b>-17%</b>	<b>11%</b>
AGROINDUSTRIES	1,008	6%	1,876	6%	1,825	7%	-3%	17%
APPAREL	1,050	6%	1,613	5%	1,154	4%	-11%	-28%
CHEMICALS	535	3%	1,028	3%	836	3%	-19%	14%
STEEL PRODUCTS	385	2%	811	3%	505	2%	-16%	-38%
FISHING	331	2%	620	2%	526	2%	-15%	14%
VARIOUS	275	2%	418	1%	340	1%	19%	-19%
TEXTILE	225	1%	393	1%	341	1%	-13%	12%
METAL - MECHANIC	191	1%	324	1%	359	1%	22%	11%
WOOD PRODUCTS	168	1%	219	1%	157	1%	-28%	0%
NON METALIC MINING	118	1%	173	1%	147	1%	-15%	7%

Economic Research - ADEX  
Source: Aduanas Perú

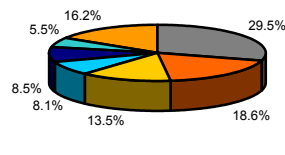


Economic Research - ADEX  
Source: ADEX DATA TRADE

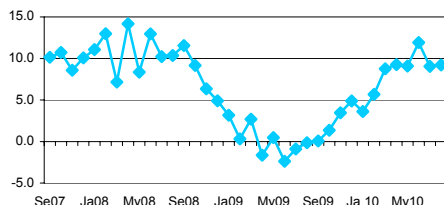
Traditional Exports by Sector 2009



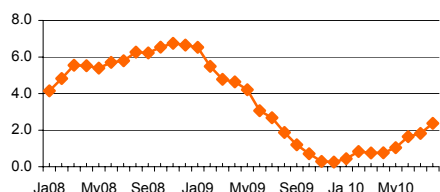
Non Traditional Exports by Sector 2009



GDP (% change)



Inflation Rate (% change 12 months)



Macroeconomic Indicators

	May	2010 Jun	Jul
<b>Gross Domestic Product (GDP)</b>			
Growth Rate (%)	9.1	11.9	9.1
<b>Trade Balance (millions of USD)</b>			
Exports (millions of USD)	293	804	445
Imports (millions of USD)	2390	3092	2964
Inflation Rate last 12 months (%)	1.04	1.64	1.82
<b>Exchange Rate</b>			
Exchange Rate (period average)	2.85	2.84	2.82
% Change (last 12 months)	-4.98	-5.09	-6.30
Exchange Rate (end of period)	2.84	2.83	2.82
% Change (last 12 months)	-5.04	-5.09	-5.46
Real Multilateral Exchange Rate Index	94.70	94.15	94.97
% Change (last 12 months)	-3.61	-6.10	-6.42
<b>Interest Rates (period average)</b>			
Local Currency			
- Interbank	1.40	1.60	1.90
- Monetary Policy Reference Rate	1.50	1.75	2.00
Foreign Currency			
- Interbank	0.40	0.40	1.90
<b>Unemployment Rate Lima (%)</b>	6.7	7.2	7.3

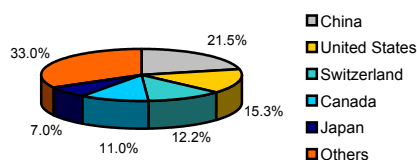
Source: BCRP, INEI  
(\* ) Projections made by Ministry of Economy and Finances

Exports Indicators  
September 2009 - August 2010

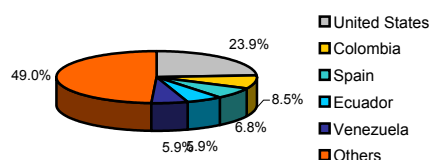
Traditional Sector				Non Traditional Sector					
Companies									
<b>Number of Exporting Companies</b>				410	<b>Number of Exporting Companies</b>				6,776
<b>Ranking of Companies</b>					<b>Ranking of Companies</b>				
N°	Company	Millions of USD		N°	Company	Millions of USD			
1	SOUTHERN PERU COPPER CORPORATION	2,760		1	CENTELSA PERU S.A.C.	154			
2	COMPANIA MINERA ANTAMINA S.A	2,488		2	TECNOFIL S.A.	110			
3	MINERA YANACOCHA S.R.L.	1,991		3	ALICORP S.A.	99			
4	SOCIEDAD MINERA CERRO VERDE S.A.A.	1,678		4	SOL MINERA REF DE ZINC	96			
5	CONSORCIO MINERO SA - CORMIN	1,653		5	CAMPOSOL S.A.	94			
Products									
<b>Number of Exported Products</b>				90	<b>Number of Exported Products</b>				3,719
<b>Ranking of Products</b>					<b>Ranking of Products</b>				
N°	Product	Millions of USD		N°	Product	Millions of USD			
1	GOLD, IN ITS OTHER RAW FORMS	7,521		1	ASPARAGUS, FRESH OR REFRIGERATED	286			
2	COPPER MINERALS AND CONCENTRATES	5,410		2	REFINED COPPER WIRES WITH TRANSVERSAL SECTION WITH DIAMETER OF MORE THAN 6 MM	223			
3	REFINED COPPER CATODS AND ITS PARTS	2,479		3	COTTON T SHIRT OF ONE COLOUR EVEN BLEACHED, FOR MEN OR WOMEN	161			
4	ZINC MINERALS AND CONCENTRATES	1,572		4	FRESH GRAPES	157			
5	FISHMEAL, PELLETS WITH A FAT CONTENT OVER A 2% IN WEIGHT	1,545		5	OTHER CUTTLEFISH, BUBBLES, FISH AND SQUID, FROZEN, DRIED, SALTED OR IN BRINE	150			
Markets									
<b>Number of Importing Markets</b>				91	<b>Number of Importing Markets</b>				172
<b>Ranking of Markets</b>					<b>Ranking of Markets</b>				
N°	Market	Millions of USD		N°	Market	Millions of USD			
1	CHINA	4,852		1	UNITED STATES	1,770			
2	UNITED STATES	3,877		2	COLOMBIA	626			
3	SWITZERLAND	3,674		3	VENEZUELA	461			
4	CANADA	2,970		4	ECUADOR	456			
5	JAPAN	1,754		5	CHILE	399			

Economic Research - ADEX  
Source: ADEX DATA TRADE

Traditional Exports Destinations  
Quarter Jun 10 - Ago 10



Non Traditional Exports Destinations  
Quarter Jun 10 - Ago 10



Peru in the Global Economy

Countries	Gross Domestic Product Crec. Var %			Inflation Rate 2009	WEF Global Competitiveness Index(**)	
	2009	2010*	2011*		GCI 2009-2010 rank	GCI 2008-2009 rank
	United States	-2.4%	3.1%		2.6%	-0.4%
Japan	-5.2%	1.9%	2.0%	1.5%	8	9
China	8.7%	10.0%	9.9%	-0.1%	29	30
Spain	-3.6%	-0.4%	0.9%	-0.3%	33	29
Germany	-5.0%	1.2%	1.7%	0.1%	7	7
Chile	-1.5%	4.7%	6.0%	2.0%	30	28
Brazil	-0.2%	5.5%	4.1%	4.8%	56	64
Venezuela	-3.3%	-2.6%	0.4%	29.5%	113	105
Colombia	0.1%	2.3%	4.0%	4.6%	69	74
Ecuador	0.4%	2.5%	2.3%	5.0%	105	104
Mexico	-6.5%	4.2%	4.5%	5.4%	60	60
Bolivia	3.3%	4.0%	4.0%	4.3%	120	118
Peru	0.9%	6.3%	6.0%	3.2%	78	83

Source: Economist Intelligence Unit, IMF  
\* Projections made by IMF (October 2010)  
\*\* Ranking by World Economic Forum.