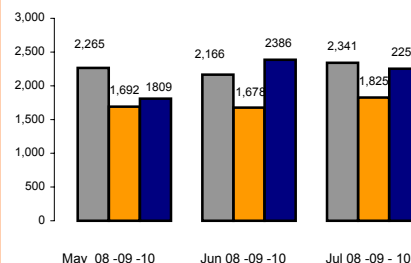


PERUVIAN EXPORTS: 2008 - 2010

| Sector | July | | | Exports Last 12 months (Aug - Jul) | | |
|------------------------------|------------------|------------------|--------------|------------------------------------|---------------------|--------------|
| | Mill. FOB USD 09 | Mill. FOB USD 10 | % Change | Mill. FOB USD 08-09 | Mill. FOB USD 09-10 | % Change |
| Traditional Agriculture | 69.9 | 74.8 | 7.0% | 682.4 | 737.7 | 8.1% |
| Traditional Fishing | 256.5 | 203.1 | -20.8% | 1,762.2 | 1,775.6 | 0.8% |
| Petroleum | 175.0 | 243.9 | 39.4% | 1,839.6 | 2,859.2 | 55.4% |
| Traditional Mining | 1,323.8 | 1,863.9 | 40.8% | 14,706.8 | 19,539.4 | 32.9% |
| Total Traditional | 1,825.2 | 2,385.7 | 30.7% | 18,991.0 | 24,911.8 | 31.2% |
| Agroindustries | 145.8 | 174.5 | 19.7% | 1,779.6 | 1,984.6 | 11.5% |
| Textiles | 30.2 | 36.7 | 21.4% | 358.6 | 351.0 | -2.1% |
| Apparel | 109.3 | 107.1 | -2.1% | 1,351.1 | 1,119.6 | -17.1% |
| Fishing | 47.0 | 79.8 | 69.8% | 570.8 | 582.8 | 2.1% |
| Metal - Mechanic | 28.2 | 35.0 | 23.9% | 350.9 | 389.8 | 11.1% |
| Chemicals | 66.8 | 123.6 | 85.0% | 907.4 | 1,067.0 | 17.6% |
| Steel Products | 40.3 | 63.5 | 57.5% | 513.3 | 724.9 | 41.2% |
| Non Metallic Mining | 12.8 | 20.1 | 57.5% | 152.7 | 177.5 | 16.2% |
| Wood Products | 12.5 | 19.1 | 52.5% | 161.3 | 180.3 | 11.8% |
| Various | 27.9 | 30.9 | 10.5% | 381.0 | 357.2 | -6.2% |
| Total Non Traditional | 520.9 | 690.1 | 32.5% | 6,526.8 | 6,934.8 | 6.3% |
| Total | 2,346.0 | 3,075.8 | 31.1% | 25,517.8 | 31,846.6 | 24.8% |

Economic Research - ADEX
Source: ADEX DATA TRADE

Quarterly Evolution (May - Jul) of Traditional Exports



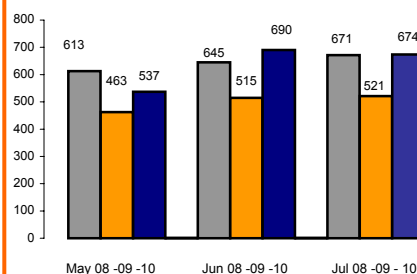
Economic Research - ADEX
Source: ADEX DATA TRADE

TOTAL EXPORTS
2005, 2008 y 2009
(MILLIONS OF FOB USD)

| SECTOR | 2005 | | 2008 | | 2009 | | % Change 2008-2009 | Average % Change 2005-2008 |
|------------------------------|---------------|-------------|---------------|-------------|---------------|-------------|--------------------|----------------------------|
| | Mill. FOB USD | % Share | FOB Mill. USD | % Share | FOB Mill. USD | % Share | | |
| TOTAL | 17,324 | 100% | 30,628 | 100% | 26,714 | 100% | -13% | 13% |
| TOTAL TRADITIONAL | 13,037 | 75% | 23,153 | 76% | 20,522 | 77% | -11% | 14% |
| TRADITIONAL MINING | 9,814 | 57% | 17,503 | 58% | 16,143 | 60% | -10% | 15% |
| PETROLEUM | 1,590 | 9% | 2,821 | 9% | 2,051 | 8% | -27% | 9% |
| TRADITIONAL FISHING | 1,303 | 8% | 1,750 | 6% | 1,683 | 6% | -4% | 7% |
| TRADITIONAL AGRICULTURE | 330 | 2% | 679 | 2% | 636 | 2% | -6% | 23% |
| TOTAL NON TRADITIONAL | 4,287 | 25% | 7,475 | 24% | 6,190 | 23% | -17% | 11% |
| AGROINDUSTRIES | 1,008 | 6% | 1,876 | 6% | 1,825 | 7% | -3% | 17% |
| APPAREL | 1,050 | 6% | 1,613 | 5% | 1,154 | 4% | -11% | -28% |
| CHEMICALS | 535 | 3% | 1,028 | 3% | 836 | 3% | -19% | 14% |
| STEEL PRODUCTS | 385 | 2% | 811 | 3% | 505 | 2% | -16% | -38% |
| FISHING | 331 | 2% | 620 | 2% | 526 | 2% | -15% | 14% |
| VARIOUS | 275 | 2% | 418 | 1% | 340 | 1% | -19% | 7% |
| TEXTILE | 225 | 1% | 393 | 1% | 361 | 1% | -21% | -13% |
| METAL - MECHANIC | 191 | 1% | 324 | 1% | 359 | 1% | 22% | 11% |
| WOOD PRODUCTS | 168 | 1% | 219 | 1% | 157 | 1% | -23% | -28% |
| NON METALIC MINING | 118 | 1% | 173 | 1% | 147 | 1% | -15% | 7% |

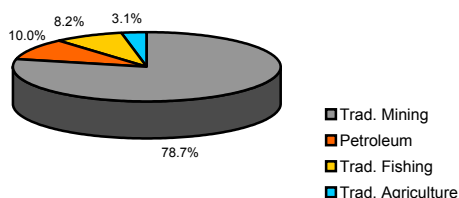
Economic Research - ADEX
Source: Aduanas Perú

Quarterly Evolution (May - Jul) of Non Traditional Exports

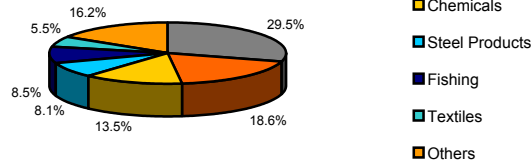


Economic Research - ADEX
Source: ADEX DATA TRADE

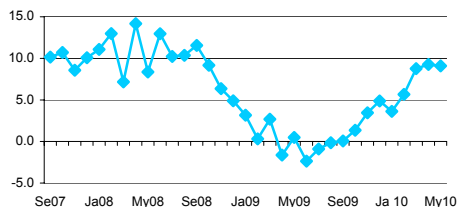
Traditional Exports by Sector 2009



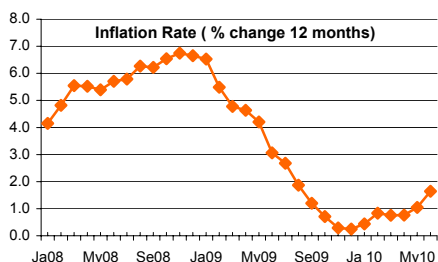
Non Traditional Exports by Sector 2009



GDP (% change)



Inflation Rate (% change 12 months)



Macroeconomic Indicators

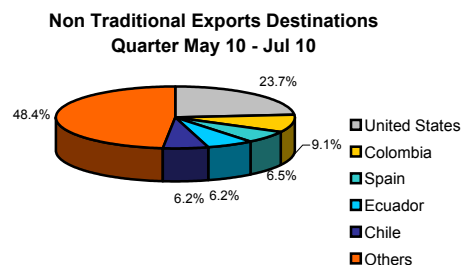
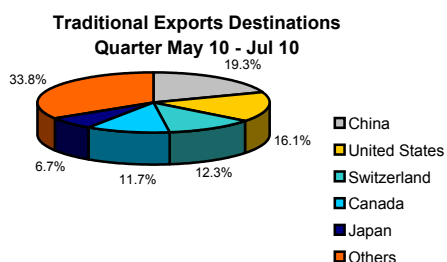
| | May | 2010 Jun | Jul |
|----------------------------------------|-------|----------|-------|
| Gross Domestic Product (GDP) | | | |
| Growth Rate (%) | 9.1 | 11.9 | 9.1 |
| Trade Balance (millions of USD) | | | |
| Exports (millions of USD) | 293 | 804 | 445 |
| Imports (millions of USD) | 2390 | 3092 | 2964 |
| Inflation Rate last 12 months (%) | 1.04 | 1.64 | 1.82 |
| Exchange Rate | | | |
| Exchange Rate (period average) | 2.85 | 2.84 | 2.82 |
| % Change (last 12 months) | -4.98 | -5.09 | -6.30 |
| Exchange Rate (end of period) | 2.84 | 2.83 | 2.82 |
| % Change (last 12 months) | -5.04 | -5.09 | -5.46 |
| Real Multilateral Exchange Rate Index | 94.70 | 94.15 | 94.97 |
| % Change (last 12 months) | -3.61 | -6.10 | -6.42 |
| Interest Rates (period average) | | | |
| Local Currency | | | |
| - Interbank | 1.40 | 1.60 | 1.90 |
| - Monetary Policy Reference Rate | 1.50 | 1.75 | 2.00 |
| Foreign Currency | | | |
| - Interbank | 0.40 | 0.40 | 1.90 |
| Unemployment Rate Lima (%) | 6.7 | 7.2 | 7.3 |

Source: BCRP, INEI
(* Projections made by Ministry of Economy and Finances)

Exports Indicators
August 2009 - July 2010

| Traditional Sector | | | | Non Traditional Sector | | | |
|--------------------------------------|----------------------------------------------------------|-----------------|--|--------------------------------------|-------------------------------------------------------------------------------|-----------------|--|
| Companies | | | | | | | |
| Number of Exporting Companies | | 497 | | Number of Exporting Companies | | 7,250 | |
| Ranking of Companies | | | | Ranking of Companies | | | |
| N° | Company | Millions of USD | | N° | Company | Millions of USD | |
| 1 | SOUTHERN PERU COPPER CORPORATION | 2,657 | | 1 | CENTELSA PERU S.A.C. | 149 | |
| 2 | COMPANIA MINERA ANTIMINA S.A | 2,507 | | 2 | TECNOFIL S.A. | 106 | |
| 3 | MINERA YANACocha S.R.L. | 2,029 | | 3 | ALICORP S.A. | 101 | |
| 4 | SOCIEDAD MINERA CERRO VERDE S.A.A. | 1,611 | | 4 | CAMPOSOL S.A. | 93 | |
| 5 | CONSORCIO MINERO SA - CORMIN | 1,541 | | 5 | SOC MINERA REF DE ZINC | 93 | |
| Products | | | | | | | |
| Number of Exported Products | | 100 | | Number of Exported Products | | 4,351 | |
| Ranking of Products | | | | Ranking of Products | | | |
| N° | Product | Millions of USD | | N° | Product | Millions of USD | |
| 1 | GOLD, IN ITS OTHER RAW FORMS | 7,530 | | 1 | ASPARAGUS, FRESH OR REFRIGERATED | 276 | |
| 2 | COPPER MINERALS AND CONCENTRATES | 5,265 | | 2 | REFINED COPPER WIRES WITH TRANSVERSAL SECTION WITH DIAMETER OF MORE THAN 6 MM | 216 | |
| 3 | REFINED COPPER CATODS AND ITS PARTS | 2,377 | | 3 | COTTON T SHIRT OF ONE COLOUR EVEN BLEACHED, FOR MEN OR WOMEN | 166 | |
| 4 | ZINC MINERALS AND CONCENTRATES | 1,546 | | 4 | FRESH GRAPES | 157 | |
| 5 | FISHMEAL, PELLETS WITH A FAT CONTENT OVER A 2% IN WEIGHT | 1,498 | | 5 | OTHER CUTTLEFISH, BUBBLES, FISH AND SQUID, FROZEN, DRIED, SALTED OR IN BRINE | 145 | |
| Markets | | | | | | | |
| Number of Importing Markets | | 93 | | Number of Importing Markets | | 174 | |
| Ranking of Markets | | | | Ranking of Markets | | | |
| N° | Market | Millions of USD | | N° | Market | Millions of USD | |
| 1 | CHINA | 4,651 | | 1 | UNITED STATES | 1,750 | |
| 2 | SWITZERLAND | 3,783 | | 2 | COLOMBIA | 617 | |
| 3 | UNITED STATES | 3,763 | | 3 | VENEZUELA | 465 | |
| 4 | CANADA | 2,924 | | 4 | ECUADOR | 450 | |
| 5 | JAPAN | 1,714 | | 5 | CHILE | 388 | |

Economic Research - ADEX
Source: ADEX DATA TRADE



Perú in the Global Economy

| Countries | Gross Domestic Product Crec. Var % | | | Inflation Rate 2009 | WEF Global Competitiveness Index(**) | |
|-----------|------------------------------------|-------|-------|---------------------|--------------------------------------|--------------------|
| | 2009* | 2010* | 2011* | | GCI 2009-2010 rank | GCI 2008-2009 rank |
| | United States | -2.4% | 3.1% | | 2.6% | -0.4% |
| Japan | -5.2% | 1.9% | 2.0% | -1.1% | 8 | 9 |
| China | 8.7% | 10.0% | 9.9% | -0.1% | 29 | 30 |
| Spain | -3.6% | -0.4% | 0.9% | -0.3% | 33 | 29 |
| Germany | -5.0% | 1.2% | 1.7% | 0.1% | 7 | 7 |
| Chile | -1.5% | 4.7% | 6.0% | 2.0% | 30 | 28 |
| Brazil | -0.2% | 5.5% | 4.1% | 4.8% | 56 | 64 |
| Venezuela | -3.3% | -2.6% | 0.4% | 29.5% | 113 | 105 |
| Colombia | 0.1% | 2.3% | 4.0% | 4.6% | 69 | 74 |
| Ecuador | 0.4% | 2.5% | 2.3% | 5.0% | 105 | 104 |
| Mexico | -6.5% | 4.2% | 4.5% | 5.4% | 60 | 60 |
| Bolivia | 3.3% | 4.0% | 4.0% | 4.3% | 120 | 118 |
| Peru | 0.9% | 6.3% | 6.0% | 3.2% | 78 | 83 |

Source: Economist Intelligence Unit, IMF
* Projections made by IMF
** Ranking by World Economic Forum.