

PERUVIAN EXPORTS: 2008 - 2010

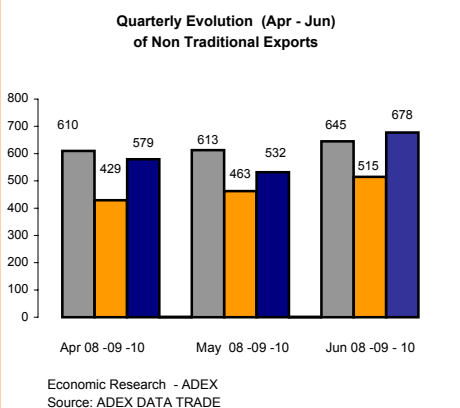
Sector	Jun			Exports Last 12 months (Jul - Jun)		
	Mill. FOB USD 09	Mill. FOB USD 10	% Change	Mill. FOB USD 08-09	Mill. FOB USD 09-10	% Change
Traditional Agriculture	48.9	73.8	50.9%	685.8	679.7	-0.9%
Traditional Fishing	257.2	203.1	-21.0%	1,790.1	1,674.0	-6.5%
Petroleum	117.9	243.9	106.9%	1,958.4	2,822.4	44.1%
Traditional Mining	1,253.6	1,855.1	48.0%	15,072.3	19,279.2	27.9%
<b>Total Traditional</b>	<b>1,677.6</b>	<b>2,375.8</b>	<b>41.6%</b>	<b>19,506.6</b>	<b>24,455.2</b>	<b>25.4%</b>
Agroindustries	142.0	172.9	21.8%	1,804.3	1,945.3	7.8%
Textiles	31.9	36.5	14.6%	362.6	344.3	-5.0%
Apparel	109.4	105.6	-3.5%	1,379.8	1,128.0	-18.3%
Fishing	54.4	79.3	45.8%	570.5	587.9	3.1%
Metal - Mechanic	26.5	34.0	28.0%	353.8	377.5	6.7%
Chemicals	61.4	121.9	98.7%	942.3	998.1	5.9%
Steel Products	41.3	58.8	42.4%	553.9	671.3	21.2%
Non Metallic Mining	12.1	20.1	66.5%	155.6	170.1	9.4%
Wood Products	11.7	18.2	55.5%	166.5	173.9	4.5%
Various	24.3	30.4	24.9%	387.8	357.0	-8.0%
<b>Total Non Traditional</b>	<b>514.8</b>	<b>677.6</b>	<b>31.6%</b>	<b>6,677.1</b>	<b>6,753.4</b>	<b>1.1%</b>
<b>Total</b>	<b>2,192.4</b>	<b>3,053.4</b>	<b>39.3%</b>	<b>26,183.7</b>	<b>31,208.7</b>	<b>19.2%</b>

Economic Research- ADEX  
Source: ADEX DATA TRADE

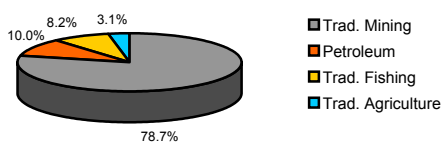
TOTAL EXPORTS  
2005, 2008 y 2009  
(MILLIONS OF FOB USD)

SECTOR	2005		2008		2009		% Change 2008-2009	Average % Change 2005-2008
	Mill. FOB USD	% Share	FOB Mill. USD	% Share	FOB Mill. USD	% Share		
<b>TOTAL</b>	<b>17,324</b>	<b>100%</b>	<b>30,628</b>	<b>100%</b>	<b>26,714</b>	<b>100%</b>	<b>-13%</b>	<b>13%</b>
<b>TOTAL TRADITIONAL</b>	<b>13,037</b>	<b>75%</b>	<b>23,153</b>	<b>76%</b>	<b>20,522</b>	<b>77%</b>	<b>-11%</b>	<b>14%</b>
TRADITIONAL MINING	9,814	57%	17,503	58%	16,143	60%	-10%	15%
PETROLEUM	1,590	9%	2,821	9%	2,051	8%	-27%	9%
TRADITIONAL FISHING	1,303	8%	1,750	6%	1,683	6%	-4%	7%
TRADITIONAL AGRICULTURE	330	2%	679	2%	636	2%	-6%	23%
<b>TOTAL NON TRADITIONAL</b>	<b>4,287</b>	<b>25%</b>	<b>7,475</b>	<b>24%</b>	<b>6,190</b>	<b>23%</b>	<b>-17%</b>	<b>11%</b>
AGROINDUSTRIES	1,008	6%	1,876	6%	1,825	7%	-3%	17%
APPAREL	1,050	6%	1,613	5%	1,154	4%	-11%	-28%
CHEMICALS	535	3%	1,028	3%	836	3%	-14%	-19%
STEEL PRODUCTOS	385	2%	811	3%	505	2%	-16%	-38%
FISHING	331	2%	620	2%	526	2%	-18%	-15%
VARIOUS	275	2%	418	1%	340	1%	-19%	-19%
TEXTILE	225	1%	393	1%	361	1%	-21%	-13%
METAL - MECHANIC	191	1%	324	1%	359	1%	22%	11%
WOOD PRODUCTS	168	1%	219	1%	157	1%	-23%	-28%
NON METALIC MINING	118	1%	173	1%	147	1%	-15%	7%

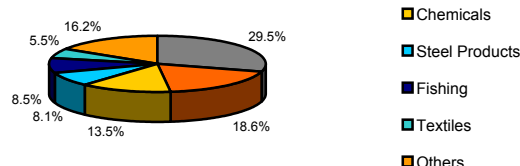
Economic Research - ADEX  
Source: Aduanas Perú



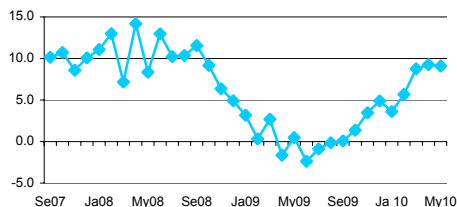
Traditional Exports by Sector 2009



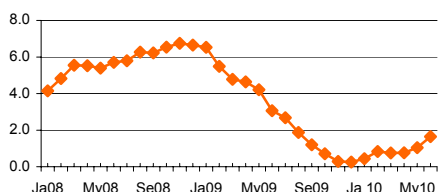
Non Traditional Exports by Sector 2009



GDP (% change)



Inflation Rate (% change 12 months)



Macroeconomic Indicators

	Apr	2010 May	Jun
<b>Gross Domestic Product (GDP)</b>			
Growth Rate (%)	9.3	9.1	11.9
<b>Trade Balance (millions of USD)</b>			
Exports (millions of USD)	421	293	804
Imports (millions of USD)	2644	2390	3092
	2222	2096	2289
<b>Inflation Rate last 12 months (%)</b>	0.76	1.04	1.64
<b>Exchange Rate</b>			
Exchange Rate (period average)	2.84	2.85	2.84
% Change (last 12 months)	-7.94	-4.98	-5.09
Exchange Rate (end of period)	2.85	2.84	2.83
% Change (last 12 months)	-4.85	-5.04	-5.09
<b>Real Multilateral Exchange Rate Index</b>			
Index	96.63	94.70	94.15
% Change (last 12 months)	-2.64	-3.61	-6.10
<b>Interest Rates (period average)</b>			
Local Currency			
-Interbank	1.20	1.40	1.60
- Monetary Policy Reference Rate	1.25	1.50	1.75
Foreign Currency			
-Interbank	0.30	0.40	0.40
<b>Unemployment Rate Lima (%)</b>	9.6	7.2	7.8

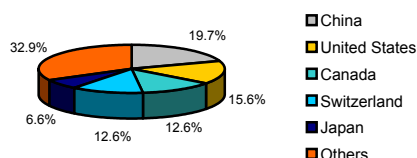
Source: BCRP, INEI  
(\* Projections made by Ministry of Economy and Finances)

Exports Indicators  
July 2009 - June 2010

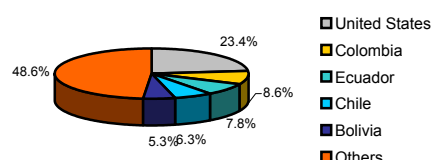
Traditional Sector				Non Traditional Sector			
Companies							
Number of Exporting Companies		488		Number of Exporting Companies		7,265	
Ranking of Companies				Ranking of Companies			
N°	Company	Millions of USD		N°	Company	Millions of USD	
1	SOUTHERN PERU COPPER CORPORATION	2,580		1	CENTELSA PERU S.A.C.	146	
2	COMPANIA MINERA ANTIMINA S.A	2,423		2	TECNOFIL S.A.	101	
3	MINERA YANACOCCHA S.R.L.	2,041		3	ALICORP S.A.	100	
4	CONSORCIO MINERO SA - CORMIN	1,588		4	TOPY TOP S.A.	90	
5	SOCIEDAD MINERA CERRO VERDE S.A.A.	1,556		5	CAMPOSOL S.A.	90	
Products							
Number of Exported Products		99		Number of Exported Products		4,309	
Ranking of Products				Ranking of Products			
N°	Product	Millions of USD		N°	Product	Millions of USD	
1	GOLD, IN ITS OTHER RAW FORMS	7,504		1	ASPARAGUS, FRESH OR REFRIGERATED	273	
2	COPPER MINERALS AND CONCENTRATES	5,105		2	REFINED COPPER WIRES WITH TRANSVERSAL SECTION WITH DIAMETER OF MORE THAN 6 MM	208	
3	REFINED COPPER CATODS AND ITS PARTS	2,350		3	COTTON T SHIRT OF ONE COLOUR EVEN BLEACHED, FOR MEN OR WOMEN	171	
4	ZINC MINERALS AND CONCENTRATES	1,518		4	FRESH GRAPES	157	
5	FISHMEAL, PELLETS WITH A FAT CONTENT OVER A 2% IN WEIGHT	1,433		5	OTHER CUTTLEFISH, BUBBLES, FISH AND SQUID, FROZEN, DRIED, SALTED OR IN BRINE	146	
Markets							
Number of Importing Markets		90		Number of Importing Markets		173	
Ranking of Markets				Ranking of Markets			
N°	Market	Millions of USD		N°	Market	Millions of USD	
1	CHINA	4,493		1	UNITED STATES	1,701	
2	SWITZERLAND	3,828		2	COLOMBIA	589	
3	UNITED STATES	3,687		3	VENEZUELA	468	
4	CANADA	2,897		4	ECUADOR	443	
5	JAPAN	1,659		5	CHILE	382	

Economic Research - ADEX  
Source: ADEX DATA TRADE

Traditional Exports Destinations  
Quarter Apr 10 - Jun 10



Non Traditional Exports Destinations  
Quarter Apr 10 - Jun 10



Perú in the Global Economy

Countries	Gross Domestic Product Crec. Var %			Inflation Rate 2009	WEF Global Competitiveness Index(**)	
	2009*	2010*	2011*		GCI 2009- 2010 rank	GCI 2008- 2009 rank
	United States	-2.4%	3.1%		2.6%	-0.4%
Japan	-5.2%	1.9%	2.0%	-1.1%	8	9
China	8.7%	10.0%	9.9%	-0.1%	29	30
Spain	-3.6%	-0.4%	0.9%	-0.3%	33	29
Germany	-5.0%	1.2%	1.7%	0.1%	7	7
Chile	-1.5%	4.7%	6.0%	2.0%	30	28
Brazil	-0.2%	5.5%	4.1%	4.8%	56	64
Venezuela	-3.3%	-2.6%	0.4%	29.5%	113	105
Colombia	0.1%	2.3%	4.0%	4.6%	69	74
Ecuador	0.4%	2.5%	2.3%	5.0%	105	104
Mexico	-6.5%	4.2%	4.5%	5.4%	60	60
Bolivia	3.3%	4.0%	4.0%	4.3%	120	118
Peru	0.9%	6.3%	6.0%	3.2%	78	83

Source: Economist Intelligence Unit, IMF  
\* Projections made by IMF  
\*\* Ranking by World Economic Forum.