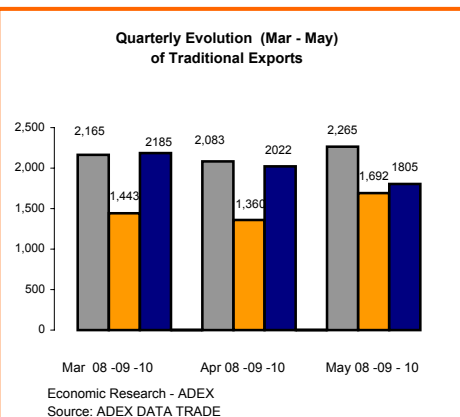


PERUVIAN EXPORTS: 2008 - 2010

Sector	May			Exports Last 12 months (Jun - May)		
	Mill. FOB USD 09	Mill. FOB USD 10	% Change	Mill. FOB USD 08-09	Mill. FOB USD 09-10	% Change
Traditional Agriculture	31.9	33.0	3.5%	699.3	654.8	-6.4%
Traditional Fishing	152.2	45.0	-70.5%	1,713.9	1,728.1	0.8%
Petroleum	136.8	217.3	58.8%	2,258.6	2,696.4	19.4%
Traditional Mining	1,371.0	1,512.0	10.3%	15,430.7	18,596.7	20.5%
<b>Total Traditional</b>	<b>1,691.9</b>	<b>1,807.3</b>	<b>6.8%</b>	<b>20,102.4</b>	<b>23,676.0</b>	<b>17.8%</b>
Agroindustries	118.5	131.3	10.8%	1,841.2	1,914.9	4.0%
Textiles	28.2	25.2	-10.5%	371.7	339.6	-8.6%
Apparel	94.5	80.2	-15.1%	1,406.0	1,131.4	-19.5%
Fishing	41.3	54.8	32.7%	583.7	562.8	-3.6%
Metal - Mechanic	35.2	22.8	-35.3%	362.3	370.0	2.1%
Chemicals	58.6	95.3	62.8%	977.4	937.2	-4.1%
Steel Products	37.2	66.7	79.3%	604.5	653.8	8.1%
Non Metallic Mining	10.2	13.9	35.6%	163.2	162.1	-0.7%
Wood Products	12.2	13.3	9.3%	174.4	167.4	-4.0%
Various	26.7	26.7	-0.1%	402.5	350.7	-12.9%
<b>Total Non Traditional</b>	<b>462.6</b>	<b>530.2</b>	<b>14.6%</b>	<b>6,886.8</b>	<b>6,590.0</b>	<b>-4.3%</b>
<b>Total</b>	<b>2,154.5</b>	<b>2,337.5</b>	<b>8.5%</b>	<b>26,989.2</b>	<b>30,266.0</b>	<b>12.1%</b>

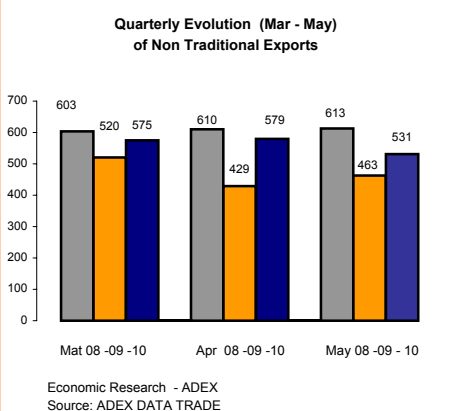
Economic Research - ADEX  
Source: ADEX DATA TRADE



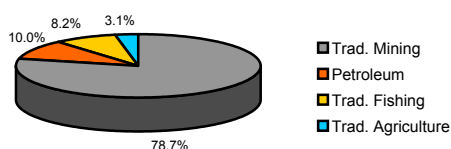
TOTAL EXPORTS  
2005, 2008 y 2009  
(MILLIONS OF FOB USD)

SECTOR	2005		2008		2009		% Change 2008-2009	Average % Change 2005-2008
	Mill. FOB USD	% Share	FOB Mill. USD	% Share	FOB Mill. USD	% Share		
<b>TOTAL</b>	<b>17,324</b>	<b>100%</b>	<b>30,628</b>	<b>100%</b>	<b>26,714</b>	<b>100%</b>	<b>-13%</b>	<b>13%</b>
<b>TOTAL TRADITIONAL</b>	<b>13,037</b>	<b>75%</b>	<b>23,153</b>	<b>76%</b>	<b>20,522</b>	<b>77%</b>	<b>-11%</b>	<b>14%</b>
TRADITIONAL MINING	9,814	57%	17,903	58%	16,143	60%	-10%	15%
PETROLEUM	1,590	9%	2,821	9%	2,061	8%	-27%	9%
TRADITIONAL FISHING	1,303	8%	1,750	6%	1,683	6%	-4%	7%
TRADITIONAL AGRICULTURE	330	2%	679	2%	636	2%	-6%	23%
<b>TOTAL NON TRADITIONAL</b>	<b>4,287</b>	<b>25%</b>	<b>7,475</b>	<b>24%</b>	<b>6,190</b>	<b>23%</b>	<b>-17%</b>	<b>11%</b>
AGROINDUSTRIES	1,008	6%	1,876	6%	1,825	7%	-3%	17%
APPAREL	1,050	6%	1,613	5%	1,154	4%	-28%	-4%
CHEMICALS	535	3%	1,028	3%	836	3%	-14%	14%
STEEL PRODUCTOS	385	2%	811	3%	505	2%	-38%	15%
FISHING	331	2%	620	2%	526	2%	-18%	14%
VARIOUS	275	2%	418	1%	340	1%	-19%	7%
TEXTILE	225	1%	393	1%	341	1%	-13%	12%
METAL - MECHANIC	191	1%	324	1%	359	1%	22%	11%
WOOD PRODUCTS	168	1%	219	1%	157	1%	-28%	0%
NON METALIC MINING	118	1%	173	1%	147	1%	-15%	7%

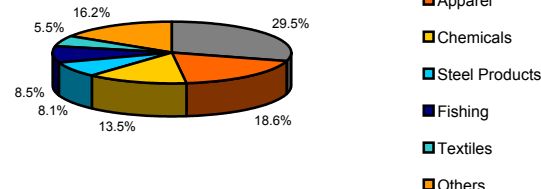
Economic Research - ADEX  
Source: Aduanas Peru



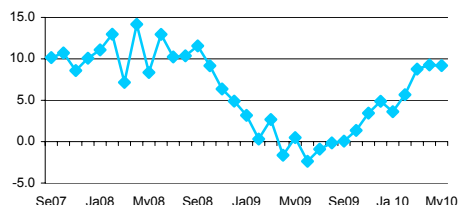
Traditional Exports by Sector 2009



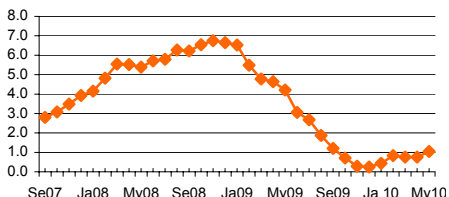
Non Traditional Exports by Sector 2009



GDP (% change)



Inflation Rate (% change 12 months)



Macroeconomic Indicators

	Mar	2010 Abr	May
<b>Gross Domestic Product (GDP)</b>			
Growth Rate (%)	8.8	9.3	9.2
<b>Trade Balance (millions of USD)</b>			
Exports (millions of USD)	403	421	238
Imports (millions of USD)	2778	2644	2340
	2375	2222	2102
<b>Inflation Rate last 12 months (%)</b>	0.76	1.04	1.64
<b>Exchange Rate</b>			
Exchange Rate (period average)	2.84	2.84	2.85
% Change (last 12 months)	-10.59	-7.94	-4.98
Exchange Rate (end of period)	2.84	2.85	2.84
% Change (last 12 months)	-10.13	-4.85	-5.04
<b>Real Multilateral Exchange Rate Index</b>			
Real Multilateral Exchange Rate Index	96.06	96.63	94.80
% Change (last 12 months)	-3.87	-2.64	-3.51
<b>Interest Rates (period average)</b>			
Local Currency			
- Interbank	1.20	1.20	1.40
- Monetary Policy Reference Rate	1.25	1.25	1.50
Foreign Currency			
- Interbank	0.40	0.30	0.40
<b>Unemployment Rate Lima (%)</b>	8.3	9.6	7.2

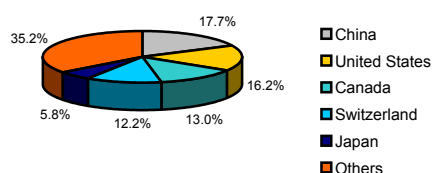
Source: BCRP, INEI  
(\*) Projections made by Ministry of Economy and Finances

Exports Indicators  
June 2009 - May 2010

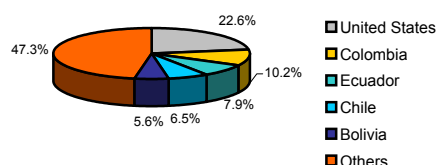
Traditional Sector				Non Traditional Sector			
Companies							
<b>Number of Exporting Companies</b>		585		<b>Number of Exporting Companies</b>		8,441	
<b>Ranking of Companies</b>				<b>Ranking of Companies</b>			
<b>N°</b>	<b>Company</b>	<b>Millions of USD</b>		<b>N°</b>	<b>Company</b>	<b>Millions of USD</b>	
1	SOUTHERN PERU COPPER CORPORATION	2,517		1	CENTELSA PERU S.A.C.	153	
2	COMPANIA MINERA ANTAMINA S.A	2,365		2	ALICORP S.A.	98	
3	MINERA YANACOCCHA S.R.L.	2,021		3	TECNOFIL S.A.	94	
4	SOCIEDAD MINERA CERRO VERDE S.A.A.	1,493		4	CAMPOSOL S.A.	93	
5	CONSORCIO MINERO SA - CORMIN	1,467		5	TOPY TOP S.A.	88	
Products							
<b>Number of Exported Products</b>		101		<b>Number of Exported Products</b>		4,632	
<b>Ranking of Products</b>				<b>Ranking of Products</b>			
<b>N°</b>	<b>Product</b>	<b>Millions of USD</b>		<b>N°</b>	<b>Product</b>	<b>Millions of USD</b>	
1	GOLD, IN ITS OTHER RAW FORMS	7,300		1	ASPARAGUS, FRESH OR REFRIGERATED	270	
2	COPPER MINERALS AND CONCENTRATES	4,888		2	REFINED COPPER WIRES WITH TRANSVERSAL SECTION WITH DIAMETER OF MORE THAN 6 MM	210	
3	REFINED COPPER CATODS AND ITS PARTS	2,288		3	COTTON T SHIRT OF ONE COLOUR EVEN BLEACHED, FOR MEN OR WOMEN	170	
4	FISHMEAL, PELLETS WITH A FAT CONTENT OVER A 2% IN WEIGHT	1,484		4	FRESH GRAPES	157	
5	ZINC MINERALS AND CONCENTRATES	1,457		5	OTHER TCOTTON T SHIRTS, FOR MEN OR WOMEN	140	
Markets							
<b>Number of Importing Markets</b>		93		<b>Number of Importing Markets</b>		175	
<b>Ranking of Markets</b>				<b>Ranking of Markets</b>			
<b>N°</b>	<b>Market</b>	<b>Millions of USD</b>		<b>N°</b>	<b>Market</b>	<b>Millions of USD</b>	
1	CHINA	4,325		1	UNITED STATES	1,665	
2	SWITZERLAND	3,843		2	COLOMBIA	580	
3	UNITED STATES	3,443		3	VENEZUELA	483	
4	CANADA	2,800		4	ECUADOR	431	
5	JAPAN	1,609		5	CHILE	364	

Economic Research - ADEX  
Source: ADEX DATA TRADE

Traditional Exports Destinations  
Quarter Mar 10 - May 10



Non Traditional Exports Destinations  
Quarter Mar 10 - May 10



Perú in the Global Economy

Countries	Gross Domestic Product Crec. Var %			Inflation Rate 2009	WEF Global Competitiveness Index(**)	
	2009*	2010*	2011*		GCI 2009- 2010 rank	GCI 2008- 2009 rank
	United States	-2.4%	3.1%		2.6%	-0.4%
Japan	-5.2%	1.9%	2.0%	-1.1%	8	9
China	8.7%	10.0%	9.9%	-0.1%	29	30
Spain	-3.6%	-0.4%	0.9%	-0.3%	33	29
Germany	-5.0%	1.2%	1.7%	0.1%	7	7
Chile	-1.5%	4.7%	6.0%	2.0%	30	28
Brazil	-0.2%	5.5%	4.1%	4.8%	56	64
Venezuela	-3.3%	-2.6%	0.4%	29.5%	113	105
Colombia	0.1%	2.3%	4.0%	4.6%	69	74
Ecuador	0.4%	2.5%	2.3%	5.0%	105	104
Mexico	-6.5%	4.2%	4.5%	5.4%	60	60
Bolivia	3.3%	4.0%	4.0%	4.3%	120	118
Peru	0.9%	6.3%	6.0%	3.2%	78	83

Source: Economist Intelligence Unit, IMF

\* Projections made by IMF

\*\* Ranking by World Economic Forum.