

PERUVIAN EXPORTS: 2008 - 2009

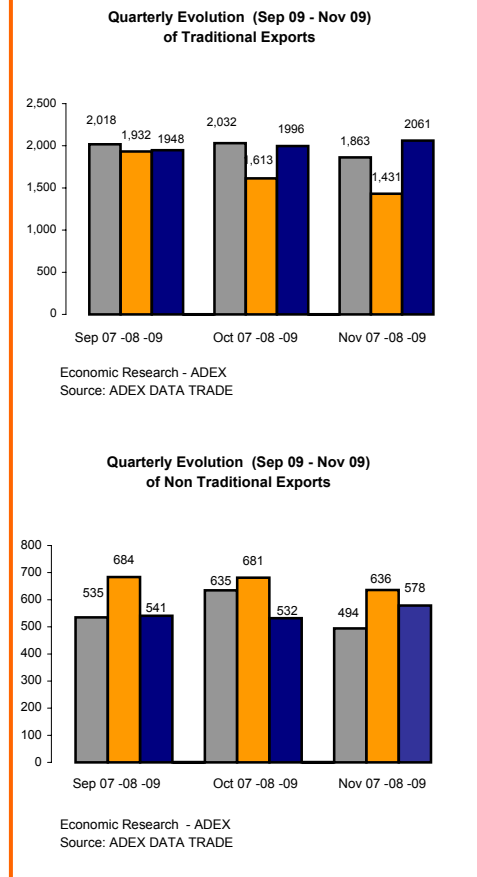
Sector	November			Exports Last 12 months (Dec - Nov)		
	Mill. FOB USD 08	Mill. FOB USD 09	% Change	Mill. FOB USD 07-08	Mill. FOB USD 08-09	% Change
Traditional Agriculture	91.3	92.2	1.0%	668.3	623.0	-6.8%
Traditional Fishing	81.7	48.9	-40.1%	1,762.4	1,603.0	-9.0%
Petroleum	129.2	222.0	71.8%	2,986.7	1,865.8	-37.5%
Traditional Mining	1,128.9	1,697.9	50.4%	18,582.8	15,376.7	-17.3%
<b>Total Traditional</b>	<b>1,431.1</b>	<b>2,061.0</b>	<b>44.0%</b>	<b>24,000.2</b>	<b>19,468.5</b>	<b>-18.9%</b>
Agroindustries	176.3	193.5	9.7%	1,907.6	1,764.8	-7.5%
Textiles	28.6	30.3	5.8%	403.3	340.6	-15.6%
Apparel	166.4	99.2	-40.4%	1,658.9	1,186.7	-28.5%
Fishing	49.0	39.8	-18.7%	627.5	520.6	-17.0%
Metal - Mechanic	26.7	35.9	34.4%	316.0	347.2	9.9%
Chemicals	82.9	77.0	-7.1%	1,028.7	835.5	-18.8%
Steel Products	35.7	41.8	17.0%	854.6	468.1	-45.2%
Non Metallic Mining	15.4	13.6	-12.0%	175.9	147.7	-16.0%
Wood Products	11.8	16.7	42.1%	225.4	153.6	-31.8%
Various	42.9	30.6	-28.7%	417.9	347.2	-16.9%
<b>Total Non Traditional</b>	<b>635.7</b>	<b>578.4</b>	<b>-9.0%</b>	<b>7,615.9</b>	<b>6,113.4</b>	<b>-19.7%</b>
<b>Total</b>	<b>2,066.8</b>	<b>2,639.3</b>	<b>27.7%</b>	<b>31,616.2</b>	<b>25,581.9</b>	<b>-19.1%</b>

Economic Research - ADEX  
Source: ADEX DATA TRADE

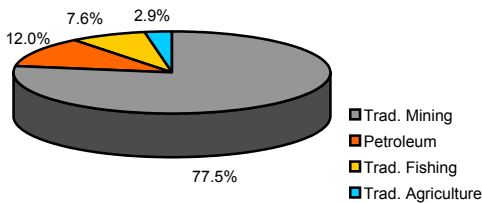
TOTAL EXPORTS  
2004, 2007 y 2008  
(MILLIONS OF FOB USD)

SECTOR	2004		2007		2008		% Change 2007-2008	Average % Change 2004-2008
	Mill. FOB USD	% Share	FOB Mill. USD	% Share	FOB Mill. USD	% Share		
<b>TOTAL</b>	<b>12,364</b>	<b>100%</b>	<b>28,723</b>	<b>100%</b>	<b>31,163</b>	<b>100%</b>	<b>8%</b>	<b>26%</b>
<b>TOTAL TRADITIONAL</b>	<b>8,817</b>	<b>71%</b>	<b>22,232</b>	<b>77%</b>	<b>23,609</b>	<b>76%</b>	<b>6%</b>	<b>28%</b>
TRADITIONAL MINING	6,771	55%	17,768	62%	18,296	59%	3%	28%
PETROLEUM	618	5%	2,445	9%	2,838	9%	6%	46%
TRADITIONAL FISHING	1,103	9%	1,554	5%	1,791	6%	74%	13%
TRADITIONAL AGRICULTURE	325	3%	465	2%	684	2%	76%	20%
<b>TOTAL NON TRADITIONAL</b>	<b>3,548</b>	<b>29%</b>	<b>6,492</b>	<b>23%</b>	<b>7,554</b>	<b>24%</b>	<b>16%</b>	<b>21%</b>
AGROINDUSTRIES	798	6%	1,551	5%	1,913	6%	82%	24%
APPAREL	876	7%	1,433	5%	1,620	5%	87%	17%
CHEMICALS	480	4%	827	3%	1,040	3%	90%	21%
STEEL PRODUCTOS	300	2%	817	3%	823	3%	93%	29%
FISHING	284	2%	523	2%	626	2%	95%	22%
VARIOUS	230	2%	377	1%	415	1%	96%	16%
TEXTILE	216	2%	353	1%	398	1%	98%	17%
METAL - MECHANIC	134	1%	226	1%	323	1%	99%	25%
WOOD PRODUCTS	136	1%	215	1%	222	1%	99%	3%
NON METALLIC MINING	94	1%	170	1%	175	1%	100%	17%

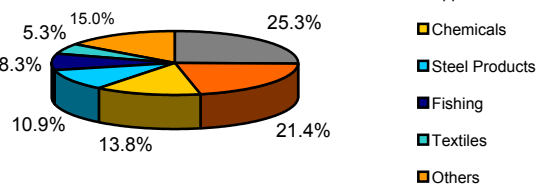
Economic Research - ADEX  
Source: Aduanas Perú



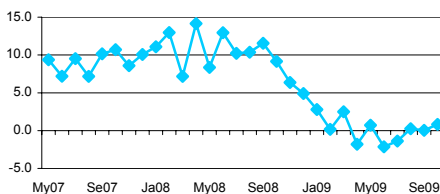
Traditional Exports by Sector 2008



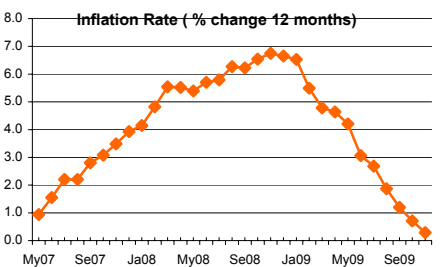
Non Traditional Exports by Sector 2008



GDP (% change)



Inflation Rate (% change 12 months)



Macroeconomic Indicators

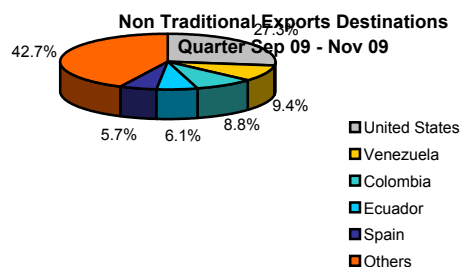
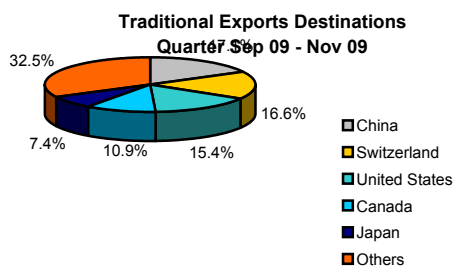
	Sept	2009 Oct	Nov
<b>Gross Domestic Product (GDP)</b>			
Growth Rate (%)	0.0	0.8	n.a.
<b>Trade Balance (millions of USD)</b>			
Exports (millions of USD)	586	497	n.a.
Imports (millions of USD)	2488	2528	2639
<b>Inflation Rate last 12 months (%)</b>	1.20	0.71	0.29
<b>Exchange Rate</b>			
Exchange Rate (period average)	2.91	2.87	2.88
% Change (last 12 months)	-1.91	-6.62	-6.93
Exchange Rate (end of period)	2.89	2.90	2.89
% Change (last 12 months)	-3.03	-5.95	-6.67
<b>Real Multilateral Exchange Rate Index</b>			
Real Multilateral Exchange Rate Index	100.30	100.07	101.53
% Change (last 12 months)	-2.79	-1.04	2.45
<b>Interest Rates (period average)</b>			
Local Currency			
-Interbank	1.20	1.15	1.22
- Monetary Policy Reference Rate	1.25	1.25	1.25
Foreign Currency			
-Interbank	0.20	0.62	0.33
<b>Unemployment Rate Lima (%)</b>	6.8	7.2	7.0

Source: BCRP, INEI  
(\* Projections made by Ministry of Economy and Finances)

Exports Indicators  
December 2008 - November 2009

Traditional Sector				Non Traditional Sector			
<b>Companies</b>				<b>Companies</b>			
Number of Exporting Companies		466		Number of Exporting Companies		7,128	
<b>Ranking of Companies</b>				<b>Ranking of Companies</b>			
N°	Company	Millions of USD		N°	Company	Millions of USD	
1	MINERA YANACOCHA S.R.L. SOUTHERN PERU COPPER CORPORATION	1,992		1	CENTELSA PERU S.A.C.	108	
2	CORPORATION	1,823		2	CAMPOSOL S.A.	103	
3	COMPANIA MINERA ANTAMINA S.A	1,742		3	ALICORP S.A.	93	
4	MINERA BARRICK MISQUICHILCA SA	1,313		4	TOPY TOP S A	87	
5	CONSORCIO MINERO S A CORMIN	1,161		5	DEVANLAY PERU S.A.C.	85	
<b>Products</b>				<b>Products</b>			
Number of Exported Products		90		Number of Exported Products		4,258	
<b>Ranking of Products</b>				<b>Ranking of Products</b>			
N°	Product	Millions of USD		N°	Product	Millions of USD	
1	ORO EN LAS DEMAS FORMAS EN BRUTO MINERALES DE COBRE Y SUS CONCENTRADOS	6,556		1	ESPARRAGOS, FRESCOS O REFRIGERADOS	245	
2	CONCENTRADOS	3,722		2	LOS DEMAS "T-SHIRTS" DE ALGODON, PARA HOMBRES O MUJERES	168	
3	CATODOS Y SECCIONES DE CATODOS DE COBRE REFINADO	1,766		3	T-SHIRT DE ALGODON P'HOMB. O MUJ., D'TEJ. TEÑIDO D'UN SOLO COLOR UNIF. INCL. BLANQUEADOS	154	
4	HARINA, POLVO Y <<PELLETS>> DE PESCADO CON UN CONTENIDO DE GRASA SUPERIOR A 2% EN PESO MINERALES DE CINCO Y SUS CONCENTRADOS.	1,331		4	ALAMBRE DE COBRE REFINADO CON LA MAYOR DIMENSION DE LA SECCION TRANSV. SUP. A 6 MM	139	
5		990		5	ESPARRAGOS PREPARADOS O CONSERVADOS, SIN CONGELAR	118	
<b>Markets</b>				<b>Markets</b>			
Number of Importing Markets		89		Number of Importing Markets		181	
<b>Ranking of Markets</b>				<b>Ranking of Markets</b>			
N°	Market	Millions of USD		N°	Market	Millions of USD	
1	SUIZA	3,912		1	ESTADOS UNIDOS	1,567	
2	CHINA	3,541		2	VENEZUELA	618	
3	ESTADOS UNIDOS	2,803		3	COLOMBIA	542	
4	CANADA	2,166		4	ECUADOR	371	
5	JAPON	1,220		5	CHILE	330	

Economic Research - ADEX  
Source: ADEX DATA TRADE



Perú in the Global Economy

Countries	Gross Domestic Product		Exports Growth 2008/2007	Inflation Rate 2008	WEF Global Competitiveness Index(**)	
	2009*	2010*			GCI 2009-2010 rank	GCI 2008-2009 rank
United States	-2.6%	0.8%	9.3%	4.2%	2	1
Japan	-6.0%	1.7%	6.2%	1.6%	8	9
China	7.5%	8.5%	10.1%	6.4%	29	30
Spain	-4.0%	-0.8%	7.1%	4.5%	33	29
Germany	-6.2%	-0.6%	8.7%	2.9%	7	7
Chile	0.1%	3.0%	0.5%	8.9%	30	28
Brazil	-1.3%	2.5%	1.5%	5.7%	56	64
Venezuela	-2.2%	-0.5%	-2.0%	27.2%	113	105
Colombia	0.0%	1.3%	12.9%	7.3%	69	74
Ecuador	-2.0%	1.0%	2.7%	8.6%	105	104
Mexico	-7.3%	3.0%	-0.9%	4.9%	60	60
Bolivia	2.2%	2.9%	3.4%	14.3%	120	118
Peru	3.5%	4.5%	8.8%	5.6%	78	83

Source: Economist Intelligence Unit, IMF

\* Projections made by IMF

\*\* Ranking by World Economic Forum.